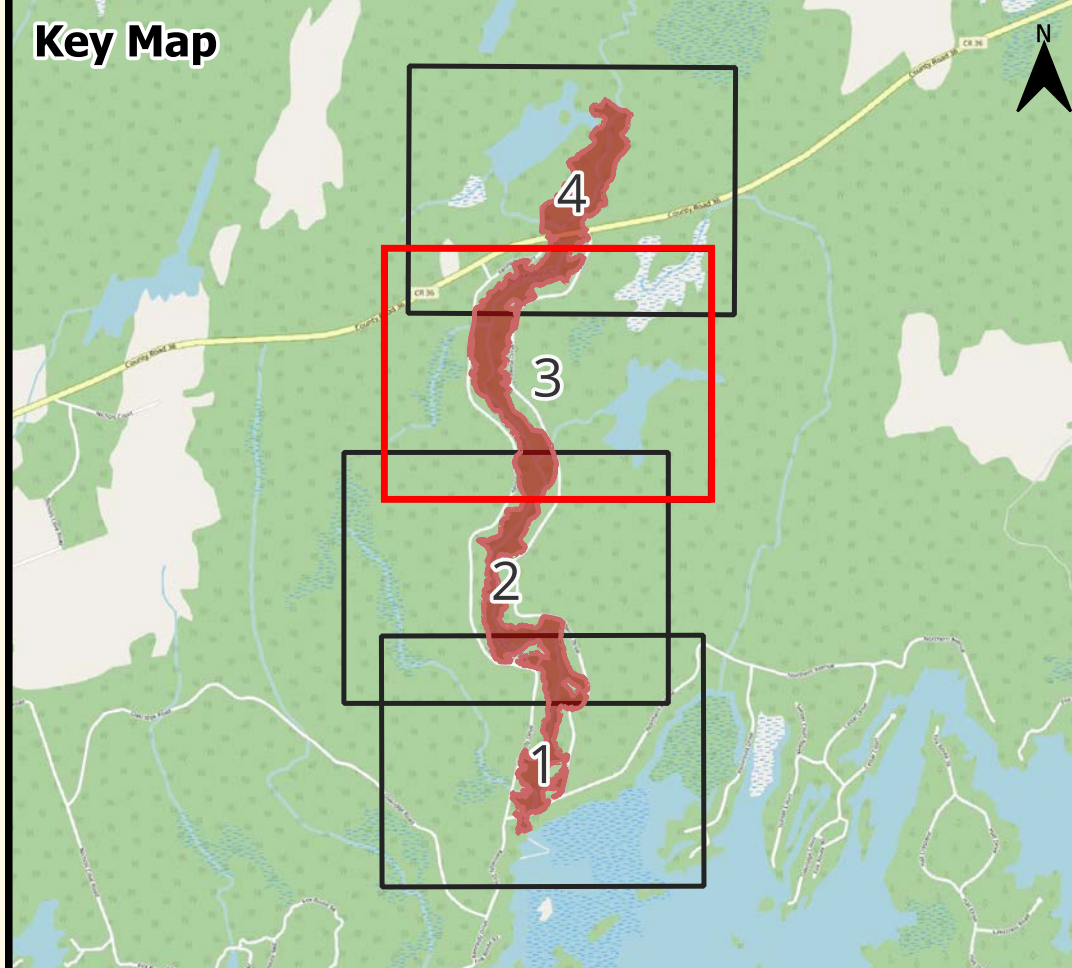


Miskwaa Ziibi River Flood Plain Map Municipality of Trent Lakes Printed: June 2024

- Legend**
- Miskwaa Ziibi River
 - Cross Sections
 - Roads
 - Miskwaa Ziibi Rvr Floodline (Regional)
 - LiDAR Contours (1.0 m)
 - Study Limit
 - Bridge
 - Weir
 - Flow Direction
 - - - Spill Sections
 - - - Match Line



- Notes:**
- 1) LiDAR (Light Detection and Ranging) survey data collected Fall 2016 and Spring 2017, by Airborne Imaging
 - 2) Contours produced by Kawartha Conservation GIS staff using LiDAR.
 - 3) Field Survey of structures by Kawartha Conservation, using RTK GPS.
 - 4) Orthophotography SCOP2018.
 - 5) Vertical Datum - CGVD2013
 - 6) Horizontal Datum - CSRS(NAD83) UTM Zone 17N
 - 7) The flood inundation areas were delineated using the DEM derived from LiDAR by Water's Edge Environmental Solutions Team Ltd.'s GIS department.
 - 8) Flood plain modelling was prepared by Water's Edge Environmental Solutions Team Ltd.'s engineering department. Input parameters were extracted from base mapping prepared by Kawartha Conservation's Planning and Development Services Department.
 - 9) This map is prepared for use in conjunction with the Flood Plain Mapping Study Nogies Creek, 2024.
 - 10) All mapped data meets provincial accuracy standards and has been subject to peer review.

REVISIONS			
No.	Description	By	Date
1	Miskwaa Ziibi River Flood Plain Mapping Study		February 2024
2	Revision 1		May 6, 2024
3	Revision 2		June 3, 2024

