



# KAWARTHA CONSERVATION

Discover • Protect • Restore



# Lake Dalrymple Working Group Meeting #3

February 1, 2022



# AGENDA

1. Welcome
2. Roundtable Introductions
3. Project Workplan Update
4. Community Engagement
  - a. Public Information Session
  - b. Engagement Survey
  - c. Personal stories about the lake
  - d. Reporting key findings to community
5. Fleming College Mapping Program Proposal
6. Location to install lake water level monitoring equipment?
7. Lake health issue clarification
8. Other business?
9. Closing – next meeting

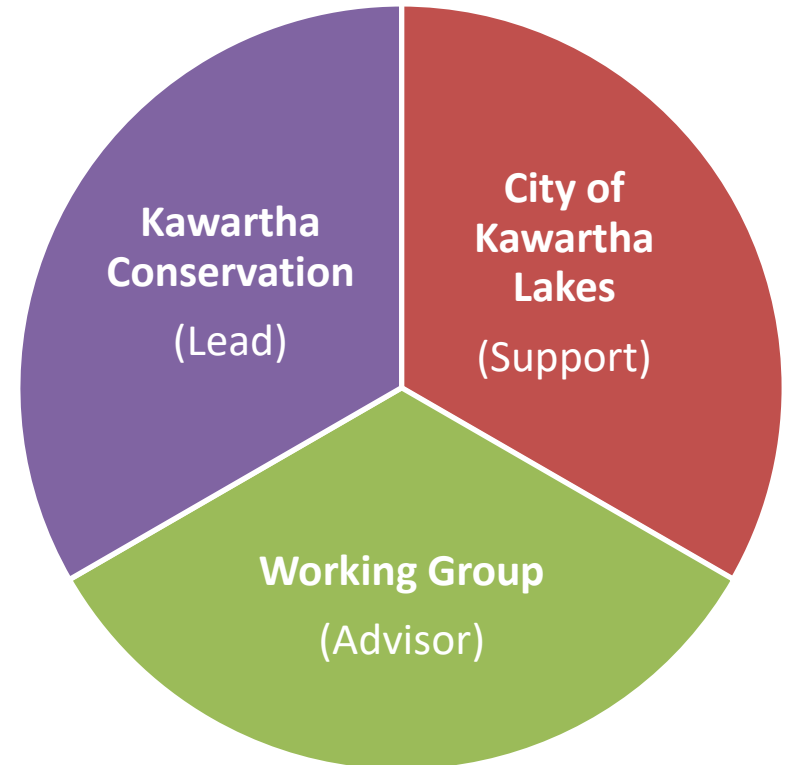
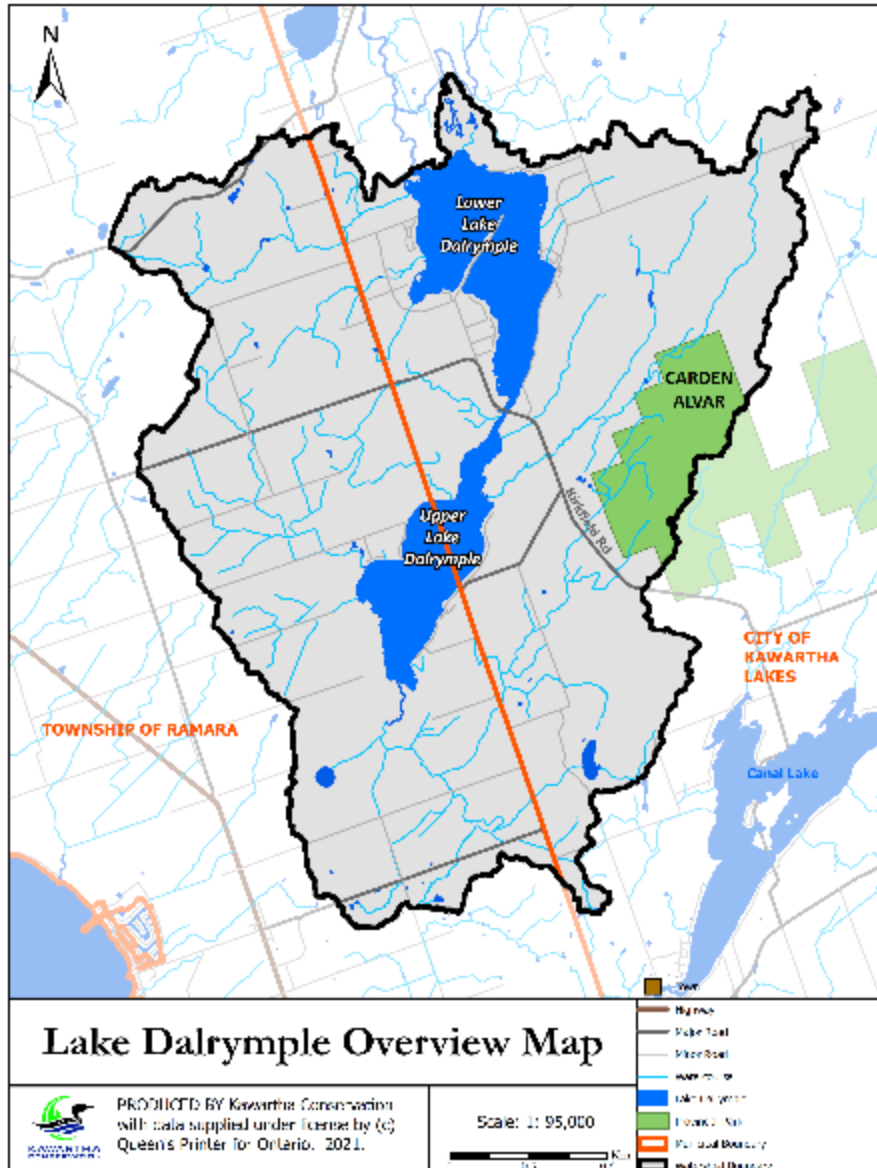
# AGENDA

1. Welcome
2. Roundtable Introductions
- 3. Project Workplan Update**
4. Community Engagement
  - a. Public Information Session
  - b. Engagement Survey
  - c. Personal stories about the lake
  - d. Reporting key findings to community
5. Fleming College Mapping Program Proposal
6. Location to install lake water level monitoring equipment?
7. Lake health issue clarification
8. Other business?
9. Closing – next meeting

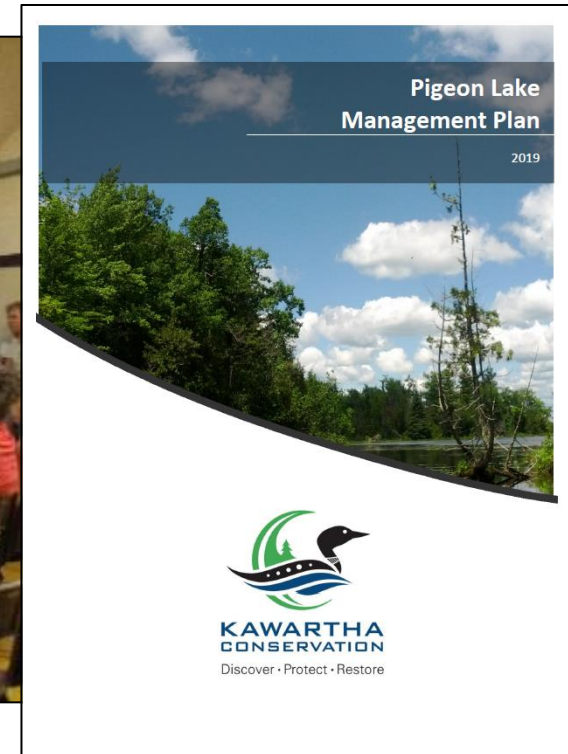
# Project Overview

## Lake Dalrymple Management Plan

4 year project  
(2021-2024)



# Project Overview - requirements

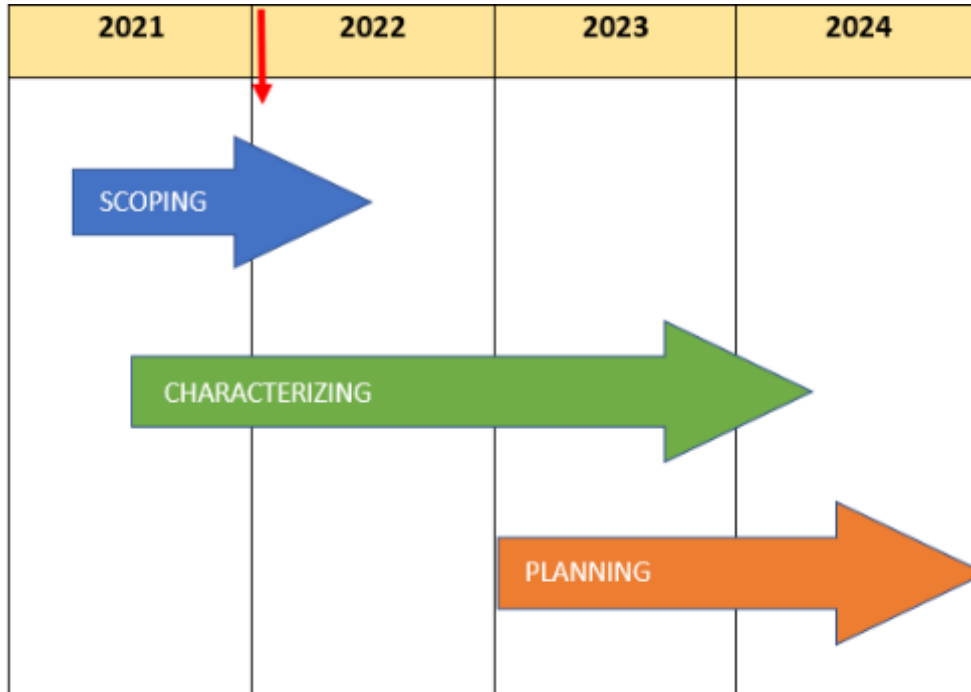


Science + Community Input = Lake Plan





# Workplan Update



KEY PLANNING COMPONENTS	
<-- Staff / Stakeholder / Working Group input -->	<b>Scoping</b> a. Who are the key stakeholders? b. What are stakeholder's key values/issues/goals? c. What information is available?
	<b>Characterizing</b> a. What are the key lake resources? b. What are the functions (benefits/values) and linkages? c. What are the key management issues? d. What are the information gaps?
	<b>Planning</b> a. What are the outcomes, goals, objectives? b. What are draft management targets? c. What are the proposed management strategies/actions? d. Evaluate alternatives against response/feasibility criteria? e. What are the preferred management actions? f. How will success, change, efforts be tracked?

# AGENDA

1. Welcome
2. Roundtable Introductions
3. Project Workplan Update
4. Community Engagement
  - a. Public Information Session
  - b. Engagement Survey
  - c. Personal stories about the lake
  - d. Reporting key findings to community
5. Fleming College Mapping Program Proposal
6. Location to install lake water level monitoring equipment?
7. Lake health issue clarification
8. Other business?
9. Closing – next meeting



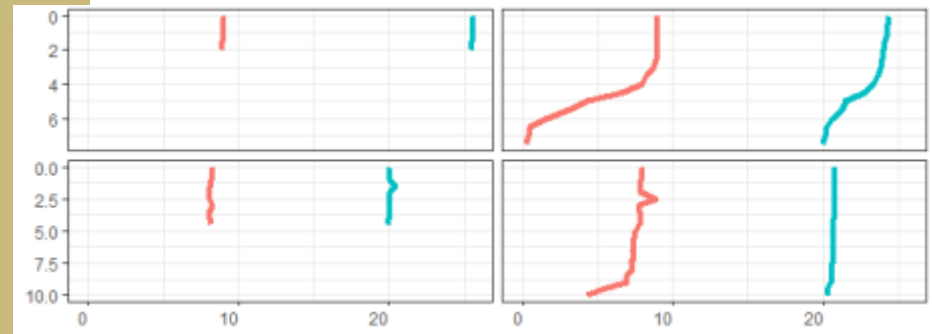
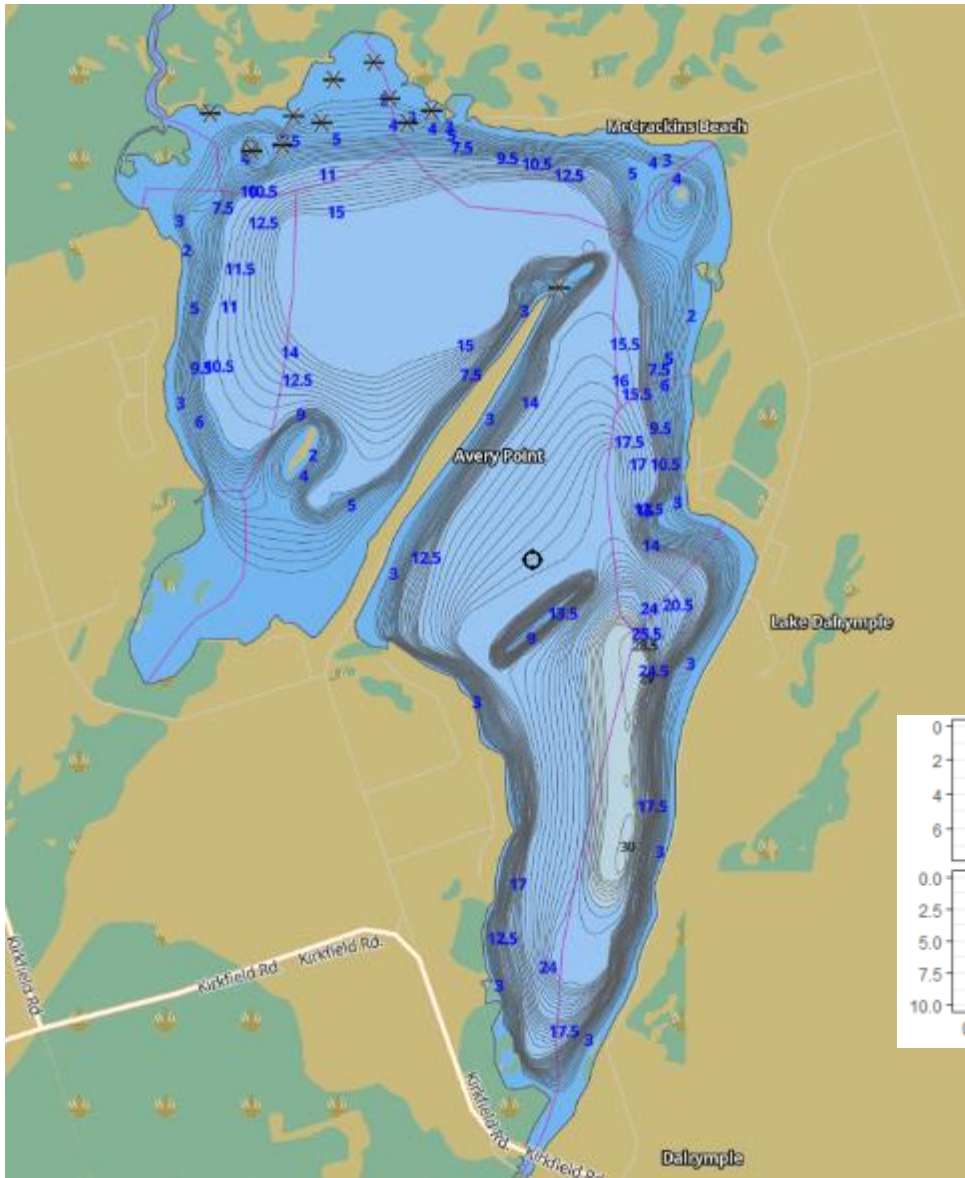


# AGENDA

1. Welcome
2. Roundtable Introductions
3. Project Workplan Update
4. Community Engagement
  - a. Public Information Session
  - b. Engagement Survey
  - c. Personal stories about the lake
  - d. Reporting key findings to community
- 5. Fleming College Mapping Program Proposal**
6. Location to install lake water level monitoring equipment?
7. Lake health issue clarification
8. Other business?
9. Closing – next meeting

# Water Level and Fish Habitat Tracking in the Kawartha Lakes

- Interactive online water levels maps for Lake Dalrymple that change based on inputted water level data.
- Interactive online fish habitat suitability maps for Lake Dalrymple that change based on inputted water level, dissolved oxygen, and water temperature data.
- A tool that uses base input data (water levels, dissolved oxygen, and water temperature) to create interactive maps and charts as above that can be used on any given lake.



Parameter — DO — Temp



# AGENDA

1. Welcome
2. Roundtable Introductions
3. Project Workplan Update
4. Community Engagement
  - a. Public Information Session
  - b. Engagement Survey
  - c. Personal stories about the lake
  - d. Reporting key findings to community
5. Fleming College Mapping Program Proposal
- 6. Location to install lake water level monitoring equipment?**
7. Lake health issue clarification
8. Other business?
9. Closing – next meeting

## ISO - location for continuous lake level monitoring

- A set of monitoring equipment to be installed to monitor lake's water levels
- It will provide hourly data on water levels in the lake
- Data will assist in the overall understanding of the lake regime; calculations of water budget
- Currently, the best source of data is a staff gauge located under the bridge in narrows. Water level is read every time we visit the area. Not enough...



Date	WL, m (staff gauge)
25-May-21	0.3
1-Jun-21	0.19
15-Jun-21	0.06
29-Jun-21	0.05
14-Jul-21	0.29
28-Jul-21	0.38
23-Aug-21	0.19
7-Sep-21	0.07
15-Sep-21	0.07
4-Oct-21	0.2
18-Oct-21	0.24
18-Nov-21	0.38





## Equipment

- Sensor, cable (10 m), logger/power unit (hosted in the metal box)
- To be visited every 6-8 weeks (data downloading, battery replacement, calibration)
- No connection to utilities is required









## Ideal Location

- Bank is steeper, but still accessible
- Depth no more than 1 m
- Sensor to be in water all the time
- Quiet location not affected by boat traffic, but still reflecting the change in water levels
- Access for the Kawartha Conservation staff
- Safe from vandalism



# AGENDA

1. Welcome
2. Roundtable Introductions
3. Project Workplan Update
4. Community Engagement
  - a. Public Information Session
  - b. Engagement Survey
  - c. Personal stories about the lake
  - d. Reporting key findings to community
5. Fleming College Mapping Program Proposal
6. Location to install lake water level monitoring equipment?
- 7. Lake health issue clarification**
8. Other business?
9. Closing – next meeting



- Heavy fishing pressure
- Walleye and muskellunge now rare
- Ice fishing pressure
- **'Toxic dump' on the former Black property on Hwy 47**
- High runoff potential into lake from shallow soils, and pollution related issues
- Dug airplane canal
- Potential for more shoreline development
- Out of date shoreline septic systems
- **Mid summer algae blooms**
- Overall water quality in lake
- Receding water levels over time
- Nutrient loading
- Heavy metal accumulation in sediments
- Bacterial levels in water, especially in summer
- Control of public boat launch at narrows
- Rocks in narrows re navigation issues
- Weed and algae growth
- **Effluent spill from 244 Lake Dalrymple Road/ MOE investigation outcome?**
- Regulation of vessels re safety, noise, and pollution
- Impacts of quarries – cumulative impacts study??
- Dissolved oxygen under ice in winter
- OTHERS?

# AGENDA

1. Welcome
2. Roundtable Introductions
3. Project Workplan Update
4. Community Engagement
  - a. Public Information Session
  - b. Engagement Survey
  - c. Personal stories about the lake
  - d. Reporting key findings to community
5. Fleming College Mapping Program Proposal
6. Location to install lake water level monitoring equipment?
7. Lake health issue clarification
8. Other business?
9. Closing – next meeting

# Closing

**Thank you!**

## **Lake Dalrymple Management Plan Webpage**

<https://www.kawarthaconservation.com/en/environmental-sciences/lake-dalrymple-management-plan.aspx>

## **Examples of Lake Management Plans**

<https://www.kawarthaconservation.com/en/environmental-sciences/lake-and-environmental-management-plans.aspx>

## **Contact Us!**

Brett Tregunno, Aquatic Biologist, Kawartha Conservation

[btregunno@kawarthaconservation.com](mailto:btregunno@kawarthaconservation.com)

705.328.2271 ext. 222

